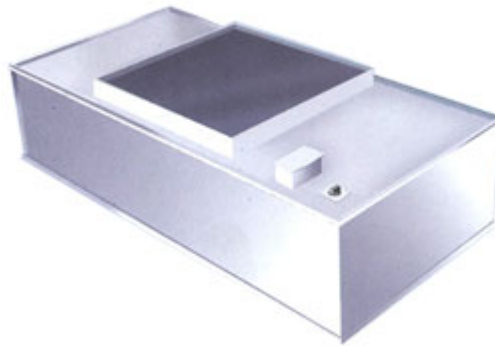




Dyna Filters
Private Limited

Fan Filter Unit



TECHNICAL SPECIFICATIONS: -

MATERIAL OF CONSTRUCTION: -

S.S.304/316 PVC coated matt finish OR CRCA powder coated with RAL9002 colour shade. Acrylic/Polycarbonate transparent side panels.

SUCTION FILTER: -

Filter Casing- S.S.304/316 flange type.

Efficiency- 95% down to 5 micron (EU-4 Rating.)

Media- Non-woven synthetic media sandwiched between two layers of High Density Polyethylene Mesh.

SUPPLY FILTER: -

Filter Casing- Aluminum factory extruded section.

Efficiency- 99.999% down to 0.01 micron (EU-14 Rating.)

Media- Micro fiberglass paper media (Imported) pleated along with Hot Melt Glue.

BLOWER MOTOR ASSEMBLY:-

Electric Motor-Crompton / Shanty make, double ended shaft, Single phase, 240 volts, 50Hz.

Impellers- Aluminium, statically & dynamically balanced, forward curve type.

Blower casings- FRP, centrifugal type.

ACCESSORIES: -

Magnehelic pressure gauge for checking the pressure drop across the supply Minipleat Hepa Filters. Range- 0 TO 50 mm of WC.

Gas cock / Aircock

Hour meter connected to UV light.

PU caster with s.s.body and front lockable type wheel.

S.S.304 height levelers.

ELECTRICALS: -

Feather touch ON/OFF switches for b/w motor, tube light, UV light & aux. socket with light indication.

40w, Fluorescent light with milky diffuser.

30w, UV light along with Hour meter.

6/16 Amps, Aux. socket with s.s.cover plate.

16 Amps. Three-pin top along with connection cable.

SELECTION CHART: -

MODEL NO	OVERALL DIMENSIONS (MM)			WORKSPACE DIMENSIONS (MM)			ELECTRICAL	
	W	D	H	W	D	H	B/W MOTOR (# X HP)	SUPPLY (PHASE)
DFPL/FFU/2-2	610	610	430	610	610	-	01X0.5	SINGLE
DFPL/FFU/3-2	915	610	430	915	610	-	01X0.5	SINGLE
DFPL/FFU/4-2	1220	610	430	1220	610	-	01X0.5	SINGLE
NOTE – ALL OTHER DIMENSIONS ARE AVAILABLE AS PER REQUIREMENT.								